

Volume 11, Issue 05

May 2009



# Palmetto Woodturner

The Newsletter of the Palmetto Woodturners,  
a Chapter of the American Association of Woodturners.

[www.PalmettoWoodturners.org](http://www.PalmettoWoodturners.org)



# Palmetto Woodturner

May 2009



## Inside This Issue

Page 1 - Cover Photo  
Page 2 - Meeting Schedule  
Page 3 - Previous Month Meeting Events  
Page 4 & 5 - Previous Month Instant Gallery Exhibits  
Page 6 & 7 - Spotlight on Members  
Page 8 - 'Shop Hop'  
Page 9 - Library Additions /Items for Swap, Sale or Buy/  
Announcements  
Page 10 - Upcoming Events / Club Information  
Page 11 - Club Information (continued)

## 2009 Meeting Schedule

May 2<sup>nd</sup> - **Dennis Liggett**  
June 6<sup>th</sup> - **Charles Farrar** (Hands On - June 5<sup>th</sup>)  
July 11<sup>th</sup> - **Bob Grant**  
August 1<sup>st</sup> - **Jimmy Clewes** (Hands On - July 31<sup>st</sup>)  
September 12<sup>th</sup> - **Nick Cook**  
October 3<sup>rd</sup> - Demonstrator from Sorby Tools  
November 7<sup>th</sup> - **Robert Lyon**  
December - To be Determined

The Palmetto Woodturners **Hands-On Workshop with Charles Farrar** will be held on June 5<sup>th</sup>. We are in need of 20 bowl blanks. The bowl blanks need to be green, face grain, and measure 5  $\frac{1}{2}$  inches deep and a maximum of 7 inches wide. If anyone can provide some or all of the needed blanks, please contact Gerald Starnes at [gstarnes@eastman.com](mailto:gstarnes@eastman.com) to discuss compensation.

## May 2009 Meeting Demonstrator

The Palmetto Woodturners will meet on **Saturday, May 2<sup>nd</sup>** at 9:00 am in the demonstration room at Mann Tool and Supply with this month's featured demonstrator, **Dennis Liggett** out of King City, Missouri. Dennis has studied under such noted turners as Allan Batty and Stuart Mortimer in England. He has developed an understanding of the basics of turning, as well as specialized techniques required in creating twisted forms, chasing threads, and making exquisitely creative wood chips and curly ribbons. He has demonstrated and taught from Hawaii to England, and his turnings have been showcased in many magazines. His personal experiences in learning to turn allow him to successfully teach others.

His teaching and demonstration schedule changes frequently. In addition to more formal scheduling, Dennis works as a mentor with the Pikes Peak Woodturners, and provides private instruction upon request. You may contact Dennis at [liggy@mindspring.com](mailto:liggy@mindspring.com), or by phoning him at 719-481-8754.



**MULTI-AXIS CANTEEN:** The classic wooden canteen, threaded or unthreaded, with same or contrast woods, and decorative variations. *Dennis gives lots of design ideas to demonstrate how to use a technical skill as a jumping off place for developing your own style.*

# April 2009 Meeting Events

Thanks to **Ken Gates'** quick thinking, he asked **Mike's Tree Service** to deliver a Maple tree (removed from Ken's neighbors yard) for availability at our April meeting. **Bill Easterling** put the word out to Members to bring their chainsaw if interested in this free Maple with a base section of 35+ inches. Armed with chainsaw, **Rick Posser** (right photo) takes advantage of the huge Maple trunks in the parking lot of Mann Tool and Supply.



**Bob Lyon** announced new additions to our Library - **Finial Star by Cindy Drozda** and **The Art of Turned Bowls by Richard Raffan**. **Pat Harris** is reviewing the Library log and noting Members that have outstanding rentals. Some Members have items 6+ months past due. A proposal will be made to the Board to charge additional fees for past due items.



Example of lidded box to be demonstrated - the bottom is turned on-center and the top is turned off-center.

- **Frank Penta** began his demonstration with a detailed handout "**Turning a Multi-Axis Birdhouse**". The multi-axis birdhouse may be interchanged with a goblet or lidded box.
- He then discussed various platters and techniques.
- Frank prefers a spindle gouge for roughing out (grind to straight across)
- Favorite tool is a skew chisel, which has 5 cuts. *"It is the one tool easiest not to catch. Cut above center of wood and below center of tool blade and will never catch."*
- He always uses a four-jaw chuck for multi-axis turning and the jaws must touch all the wood!
- Grind on bowl gouge is 45 degrees and on spindle gouge is 35 degrees.
- Safety Tip - Always approach spinning wood with a partially open tool and never push tool into the wood!



Dyed Poplar platter

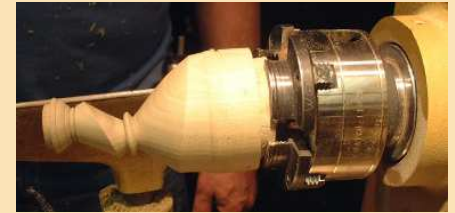


Multi-axis, multi-footed, Ambrosia Maple platter



Textured, black gesso platter

*"BEAD, COVE, FLAT - that's all there is in woodturning."* Learn wrist motion by using index finger to guide.



Bottom of lidded box

Sample turnings of **Frank Penta's** work

Frank admires **Jim Brewton's** 'square-round' Maple bowl during the Instant Gallery Critique.



**Jay Daniels** is all smiles as his children assist him during the monthly meeting Raffle.



# April 2009 Instant Gallery Exhibits



Jay Daniels - Pecan Wall Hanging with Lacquer



Jay Daniels - Huckleberry Wall Hanging with Lacquer



Jay Daniels - Huckleberry Wall Hanging with Lacquer



James Whaley - Cherry with Lacquer



Dick Eichler - Purpleheart, Cherry, Maple with Lacquer



Jim Brewton - Pear with Arm-R-Cell



Jim Brewton - Maple with Arm-R-Cell



Greg Prevost - Natural Edge Bowl with Oil/Poly



James Whaley - Sugarberry with Lacquer



Hal Taylor - Sycamore with Lacquer



Hal Taylor - Pear with Tung Oil



Hal Taylor - Pear (Buffed Only)



Roland Besel - Cherry



Dick Eichler - Pear and Bloodwood

## April 2009 Instant Gallery Exhibits



Ray Tiffault - Cherry with  
Deft Satin Spray



James Whaley - Maple,  
Ebony and Zebrawood with  
CA Glue Finish



James Whaley - Bradford  
Pear with Lacquer and Dye



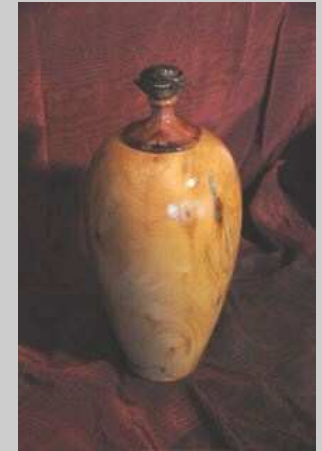
Dick Fuller - Cedar  
with Lacquer Buff



Dick Fuller -  
Walnut, Maple,  
Yellowheart,  
Cherry, Purpleheart



Dick Fuller -  
Purpleheart, Maple,  
Cherry and Yellowheart



Michael Rabkin -  
Cedar, Sun-bleached  
Mahogany with Seed  
Pod Flower Finial



Roland Besel - Pear  
Salt Shaker (one  
piece design)



Roland Besel -  
Pear with Salad  
Bowl Finish



Roland Besel -  
Cherry with  
Salad Bowl Finish



Tommy Doyle -  
"Wife's Want"

**Cover Photo:** This wonderful piece of art is the talented work of woodturner **Hal Taylor** of Greenwood, SC. *"This small hollow form is similar to the pieces John Jordan does, but his, of course, are much larger. I really like his work, and I named the piece "mini-Jordan". It's Bradford pear measuring 2.5 inches high and 3 inches in diameter. After turning the hollow form I used a reciprocating carver to get the initial cuts followed by shaping with grinders and sanders in a Foredom type tool. The curved top (lips) was mostly done with small files. Finishing was only with the Beall system. Incidentally, it was selected as a photo of the day on the AAW web site about a month ago, and John Jordan had a nice comment - "Want to come work for me? That's pretty good"."* - Hal



## Spotlight on Members

**New Membership** - *The Palmetto Woodturners extend a warm welcome to our newest member:* **John Hentschel**  
Columbia, SC  
[jhentschel@sc.rr.com](mailto:jhentschel@sc.rr.com)

**Membership** - As of April 4<sup>th</sup>, there are **160** Palmetto Woodturner Members! In our Chapter, **57** are members of the American Association of Woodturners.

*If you are a new member, and would like assistance with a turning problem, the following **Mentors** are available to help you:*

<b>Jack Gould</b>	803-359-3438	<a href="mailto:rgould@sc.rr.com">rgould@sc.rr.com</a>	<b>Marcia Roof</b>	803-791-4946	<a href="mailto:mmroof710@att.net">mmroof710@att.net</a>
<b>Bill Lee</b>	803-345-9568	<a href="mailto:slee45@sc.rr.com">slee45@sc.rr.com</a>	<b>Jim Rozelle</b>	706-855-5164	<a href="mailto:jjrozy@comcast.net">jjrozy@comcast.net</a>
<b>Charles Noller</b>	803-496-9563	<a href="mailto:chaswinroll50@earthlink.net">chaswinroll50@earthlink.net</a>	<b>Michael Rabkin</b>	803-779-4900	<a href="mailto:mfrdds@sc.rr.com">mfrdds@sc.rr.com</a>



Member **David Pietras** proudly displayed several of his students' wood turning projects at our April meeting. David teaches Building/Construction at Richland Northeast High School, which has grades 9-12. He teaches 58 students broken into 4 periods. David adds that next year his class will be renamed Cabinet Making and it will consist of four levels with a large part involving woodturning. For two days in April, **Robert Lyon** gave David's class, and a Sculpture Art Class, a slide show and a lathe demonstration.



Northeast High School students' turnings (left photo): The large bongo drum was made by Joel Gross, the walking stick by Robert Clark, the maple goblet by Tevin Johnson and the walnut cup by Mitchell Toddy

**Robert Lyon**  
demonstrating for  
Northeast High School.

**Congratulations to Robert Lyon** who has been selected as a resident fellow for the **Wood Turning Center's 2009 International Turning Exchange Residency Program**. The International Turning Exchange is an eight-week residency program (June - August 2009) for five artists from around the world, held each summer at the University for the Arts in Philadelphia. This residency is designed for artists working in wood to focus on advanced technical innovations, aesthetics, and techniques.

The Wood Turning Center is a non-profit arts institution dedicated to developing the art and craft of the lathe-turned object by encouraging existing and future artists and cultivating a public appreciation of the field. The Center was founded in 1986, and since has become an internationally recognized source of information and assistance to artists, hobbyists, galleries, museum, collectors and educators. The Wood Turning Center pursues its goals of education, preservation and promotion through traveling exhibitions, international conferences, educational programs and the annual international Artist-in-Residence program, in addition to high quality publications and an extensive permanent collection and resource center.

To learn more about Robert and his work, visit his website at [www.robertflyon.com](http://www.robertflyon.com)

## Spotlight on Members (continued)

**Oops I goofed!** I erroneously omitted **Roland Besel's** name and photo from the Hands on Woodturning Workshop with Joe Ruminski held on March 6<sup>th</sup>. Joe, I hope you didn't have too much trouble explaining to your wife where you were on that day!

**Mike Weaver** has a friend who is taking down a Maple tree in Greenville, SC. The tree is easily accessible and the base is about 30" in diameter. We are welcome to have whatever amount of wood we can carry off. If you would like more details, call Mike at (803) 609-1746 or email him at [mt23weaver@aol.com](mailto:mt23weaver@aol.com).

**GOT WOOD???** There is still **FREE MAPLE WOOD** available in the parking lot at Mann Tool and Supply courtesy of Mike's Tree Service. Just bring your chainsaw!!

Congratulations to **Bill Lee** who won **First Place** at Francis Marion University during the Arts' Alive Festival in Florence, SC. **Pat Harris** helped Bill with the booth while Bill's wife, Sue, was in Ohio at a genealogy conference.

The Savannah River Woodturners is a new club which began in 2008 in the Central Savannah River Area and is headquartered in Evans, GA. It has grown from a half dozen woodturners meeting in various shops to a paying membership of 30 members meeting in its' first permanent location. This past Saturday on April 17<sup>th</sup>, the club enjoyed a demonstration of Celtic Pens by Palmetto Woodturners' own **James Whaley**. James brought to the demonstration more than just technical knowledge, though, folks couldn't write fast enough or ask enough questions to learn all that James could tell about the fabrication of Celtic Pens and CA glue finishes. **What many of the woodturners recognized in James was his enthusiasm for woodturning and the evident fun he was having in sharing knowledge and time with his fellow woodturners. We in the Savannah River Woodturners want to thank James for reminding us of why we became woodturners and why joining a club and networking with fellow woodturners is so important.** Thank you James!! - **Jim Rozelle** and **Lee Carey**

WoodZone would like to recognize and thank **Pat Harris** for all he has done to **help organize and coordinate the official, "Carolina Penturners Club."** The meetings have been well attended and have shown a lot of hidden talent in our woodworking community. A special thanks goes out to everyone that has helped with the demonstrations or shared their talents, creativity, and knowledge with others. The next meeting will be held at WoodZone on Saturday May 2<sup>nd</sup> 2009 starting at 1:00pm. A demonstration on segmented pen making is planned - - Learn techniques for combining aluminum and copper with various wood veneers and blanks to create beautiful pens.

Member **Jay Daniels** will demonstrate pens with wooden center bans and inlay at the Carolina Penturners Club on Saturday, June 6<sup>th</sup> 2009. The meeting will be held at Woodzone starting at 1:00pm.

## Spotlight on Members (continued)



### SHOP HOP with Pat Harris Palmetto Woodturner Member: JACK GOULD

My April 'Shop Hop' visit was with one of our faithful members since the Fall of 1999. While not an *official* Charter Member, he joined the 3<sup>rd</sup> meeting, when there was only 20+ on roll. Since that time, Jack has served in many capacities including: Newsletter Editor, Refreshment Chairman, Wood Pirates Chairman, Wood Sealer Project Coordinator, Friday Night Demonstrator's Supper Coordinator, Mentor, Board Member and Chapter President. Jack can tell you lots of stories about serving in each of these capacities and gives credit to those who have been there to help him, as well as those times when he felt like the "Lone Ranger".

It's not often you meet someone so dedicated and willing to give back to an organization. One of Jack's greatest joys has come from mentoring new members, who are just getting started in woodturning. He met Woody Goforth, who gave him a few lessons. He then bought his first lathe (a General 160) in 1999 and turned his very first tiny bowl. He appreciated Woody's help so much that he decided to help others as he gained knowledge and skills. He began an active program for mentoring chapter members in 2005 and developed a curriculum, "Woodturning for Dummies", which included helpful handouts and resource lists. Jack said the initial sessions covered the basics for the inexperienced, who would come to his small shop where his wife, Mary Ann, would serve cookies, coffee and soft drinks. Later, more advanced woodturning techniques were shared, such as tool sharpening, bowl coring, and how to use specific hollowing tools. More than 30 members have received some type of mentoring at 'Gould's Shop' . . . and . . . I was fortunate enough to be one of the recipients!

Ever since that first tiny bowl, he has been intrigued with bowl turning. He has turned hundreds and has 60 -70 lying around in his shop in various stages identified by wood species and initial turning dates to track drying times for those from green wood. *I have never seen so many bowls waiting for his finishing touch!* Jack just grinned when he showed me some beautiful spalted Maple bowls from a tree taken down in his yard. There were many others that included Cherry and some glorious Oak burl. Jack tells me he loves to work with "crappy wood" just to see what he can make from it. While he does turn other items, *He Loves to Turn Bowls* and states that hollow forms are his most challenging.

He is a Juried Member of the South Carolina Artisans Center located in Walterboro and displays there regularly along with pieces he has at the Cotton Exchange Gift Shop in the State Museum. He is most proud of a commissioned set of goblets and plates for a wedding communion.

Even if Jack has a rather small area for himself and his PowerMatic Lathe, he most definitely has the most beautiful view overlooking his dock and lake where he and Mary Ann live off Beech Creek Road in Lexington. He is enjoying his retirement from the SC Forestry Commission, where he served as the Agency Director. When he is not at his lathe, he loves dove hunting, fly tying, fly fishing, and boating on Lake Murray. His four grand children, ages 10 to 21, also help keep him an active and healthy 76 year old. Please take time to say *Thank You to Jack* for his contributions over the past ten years, which have helped to make the Palmetto Woodturners a strong and friendly chapter.



**New Additions to the Ernest Lowry Library** - *In addition to the many woodturning Books, DVDs and Videos available through the Club Library, 'check out' what's new -*



**Turn it Up with Jimmy Clewes** - 3 DVD Set (total running time - 6 hrs)

**Volume 1** - A colored form turned from Maple with hand carving and 12 carat white gold; A simple hat turned thinly without any jigs - just careful tooling; Jimmy talks about various methods for mixing and using coloring

**Volume 2** - A natural edge bowl from Acacida burr, discussing shape, tooling and forming; A lidded box turned from Box Elder burr with chattered Ebony Insert

**Volume 3** - A double natural-edge turning from Australian Mallee Burr; A unique multi-offcenter sculpture with Ash with Ebony highlights

**Items for Swap, Sale or Buy** - Personal classified ads are available to all PWT Members to buy, sell or trade woodworking related items. To place an ad, contact Gwen Simpson at (803) 663-6675 or email at [levelbest@bellsouth.net](mailto:levelbest@bellsouth.net).

## Announcements

### Palmetto Woodturners Hands-On Woodturning Workshop with Charles Farrar

Friday, June 5, 2009 - 9 to 5 at Mann Tool and Supply

**Charles Farrar** will teach an open face bowl with hand scalloped flutes. Student skill level should be at least advanced beginner. (You should be able to turn a bowl on your own before attending.) If you are interested in participating in this hands-on workshop, **please reply to Marcia Roof at [mmroof710@att.net](mailto:mmroof710@att.net) or you may call her at (803) 260-0057.**

**Biographical information for Charles Farrar:** *Charles' fascination with wood began when he was a child in southern Virginia. Today, using a Nichols lathe, he has turned for 15 years and shown work in major cities in the country. A full time artist since 1997, he gives talks and has demonstrated locally and at the AAW Symposium. He is a member of two North Carolina woodturning clubs and the American Craft Council. The many venues of his work include private collections, corporate purchasers, The U. S. State Department, and a museum permanent collection.*



Charles' open face bowl with hand scalloped flutes.

Mann Tool and Supply would like to remind Palmetto Woodturner Members to check out their all new website [www.manntools.com](http://www.manntools.com). The full calendar of events is posted and they post specials and coupons on the website from time to time for members to take advantage of.

## Upcoming Events

### Antique Hand Tool Show & Swap

Saturday May 2<sup>nd</sup> from 9:00am to 5:00pm at Woodzone, West Columbia, SC

Reconnect with our shared woodworking heritage as fellow tool collectors show off the tools that formed the foundation of modern woodworking. Do you have an antique hand tool in your shop you'd like to learn more about, sell, or swap? This is the event for you. FREE - Come and look or set up a table at no cost. Call (803) 791-3823 to reserve a free space.

### The 23<sup>rd</sup> Annual National AAW Symposium 2009

Friday, June 26<sup>th</sup> - Sunday, June 28<sup>th</sup> at the Albuquerque Convention Center in Albuquerque, New Mexico

Registration fee includes demonstrations, Instant Gallery, trade show and auction

For detailed information visit their website: <http://www.woodturner.org/sym/sym2009/>

### Turning Southern Style XV sponsored by The Georgia Association of Woodturners

Friday, September 18<sup>th</sup> - Sunday, September 20<sup>th</sup> at the Unicoi State Park and Lodge near Helen, GA

This year's featured turners include: Al Stirt, Art Liestman and Bill Grumbine

For additional information visit their website: <http://gawoodturner.org/symposium.shtml>

### 2009 NC Woodturning Symposium sponsored by a federation of participating NC Chapters of the AAW

Friday, October 23<sup>rd</sup> - Sunday, October 25<sup>th</sup> at the Greensboro Coliseum Complex in Greensboro, NC

17 international and regional demonstrators including: Allen Batty, Stewart Batty, Jimmy Clewes, Ray Key, Stewart Mortimer, Chris Ramsey, Nick Cook and John Jordan

For additional information visit their website: <http://www.northcarolinawoodturning.com/>

## Club Information

### Supplier Discounts to Palmetto Woodturner Members

Remember when purchasing your woodworking tools and supplies, the following suppliers offer special discounts Members:

**Mann Tool and Supply**, 802 Chris Drive, West Columbia, SC 29169, Phone: 1-800-356-6266, Website: [www.manntools.com](http://www.manntools.com)

*10% discount on all accessories (power tools and equipment are excluded)*

**WoodZone**, 2263 Sunset Blvd, West Columbia, SC 29169, Phone: 803-233-3764, Website: [www.woodzone.com](http://www.woodzone.com)

*10% discount on all items except power tools, dimensional lumber, gift cards (however, a member using a gift card gets a discount like normal), consignment items, and sale items.*

**Hartville Tool Woodworking**, Phone: 1-800.345.2396, Website: [www.hartvilletool.com](http://www.hartvilletool.com)

*20% discount on all regularly priced merchandise for first year, 15% thereafter*

**Klingspor's Woodworking Shop**, Phone: 1-800-228-0000, Website: [www.woodworkingshop.com](http://www.woodworkingshop.com)

*10% discount for on-line, phone orders and in-store purchases from any of their store locations*

## Club Information

The Palmetto Woodturners typically meet on the first Saturday of each month (see Meeting schedule for dates) at **Mann Tool and Supply, Inc.**, 802 Chris Drive, West Columbia, SC. Chris Drive is the frontage road on the east side of I-26 between Highway 378 and Highway 1.

From I-26 westbound - Take exit 110 (Highway 378). Turn Right onto Highway 378 and Right at first light onto Chris Drive. Mann Tool is approximately 3/4 mile on the left.

From I-26 eastbound - Take exit 110 (Highway 378). Turn Left onto Route 378. Turn right at first traffic light (at the McDonalds) onto Chris Drive, approximately 3/4 mile on left.

We host an instructional woodturning demonstration at each meeting and club members bring samples of their work for the monthly Instant Gallery exhibit. Prospective members and guests are always welcome.

**Members and guests are requested to park in the lot behind Mann's away from the loading dock.**

### 2008 Officers and Board of Directors:

President	Steve Harrell	803-771-4089	<a href="mailto:SGHarrell@aol.com">SGHarrell@aol.com</a>
Vice President	James Whaley	803-270-5282	<a href="mailto:docdrywood@aol.com">docdrywood@aol.com</a>
Secretary/Treasurer	Greg Prevost	803-238-1430	<a href="mailto:gprevost@sc.rr.com">gprevost@sc.rr.com</a>
Board of Directors	David Pietras	803-699-7348	<a href="mailto:tpietras@sc.rr.com">tpietras@sc.rr.com</a>
	Pat Harris (2 <sup>nd</sup> Yr)	803-808-1964	<a href="mailto:pharris4@sc.rr.com">pharris4@sc.rr.com</a>
	Robert Lyon (1 <sup>st</sup> Yr)	803-695-3656	<a href="mailto:rflyon@bellsouth.net">rflyon@bellsouth.net</a>
	Jay Daniels (1 <sup>st</sup> Yr)	803-233-1413	<a href="mailto:jdaniels14@sc.rr.com">jdaniels14@sc.rr.com</a>

### Club Management:

Exhibitions Chairman	Joey Vann	803-407-8002	<a href="mailto:vanwoodturner@bellsouth.net">vanwoodturner@bellsouth.net</a>
Librarians (Co-Chairs)	Robert Lyon	803-695-3656	<a href="mailto:rflyon@bellsouth.net">rflyon@bellsouth.net</a>
	Pat Harris	803-808-1964	<a href="mailto:pharris4@sc.rr.com">pharris4@sc.rr.com</a>
	David Pietras	803 699-7348	<a href="mailto:tpietras@sc.rr.com">tpietras@sc.rr.com</a>
Media Specialist:	Gwen Simpson	803-663-6675	<a href="mailto:levelbest@bellsouth.net">levelbest@bellsouth.net</a>
Newsletter Editor	Jerry Daniels	803-731-1258	<a href="mailto:jdanielssr@sc.rr.com">jdanielssr@sc.rr.com</a>
Raffle Prize Coordinator	Jay Daniels	803-233-1413	<a href="mailto:jdaniels14@sc.rr.com">jdaniels14@sc.rr.com</a>
Deputy Prize Coordinator	Bill Easterling	803-353-3502	<a href="mailto:billwilwan@aol.com">billwilwan@aol.com</a>
Program Chairman	Charles Watson	803-959-0765	<a href="mailto:cbwatson@bellsouth.net">cbwatson@bellsouth.net</a>
Southern States Representative	Wink Clark	803-957-7650	<a href="mailto:wink_clark@yahoo.com">wink_clark@yahoo.com</a>
Webmaster	Gerald Starnes	803-794-0119	<a href="mailto:joenat56@aol.com">joenat56@aol.com</a>
Hands-On Session (Co-Chairs)	Marcia Roof	803-791-4946	<a href="mailto:mmroof710@att.net">mmroof710@att.net</a>